

# Floor plans.

## Introduction

# Welcome to your new home

You have contracted with CBH to build your home for you to what we call a 'blank canvas'.

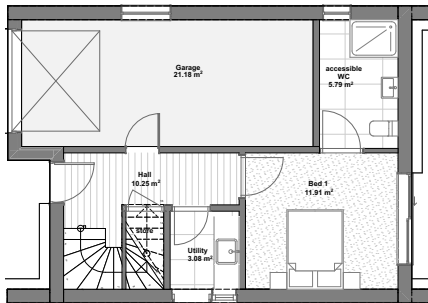
A blank canvas is a plastered and painted shell home. Rooms with services such as water or gas are capped at the wall, ready for the installation of the kitchen or bathroom.

You will take ownership of your home at this stage, allowing you to finish the home to your exact requirements. You can use the below floor plans to start designing the interior spaces of your home.

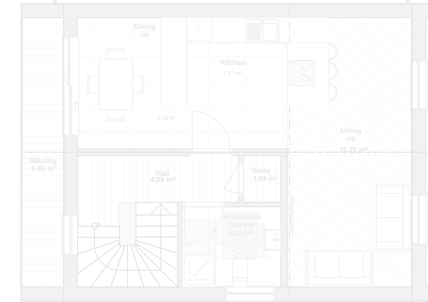
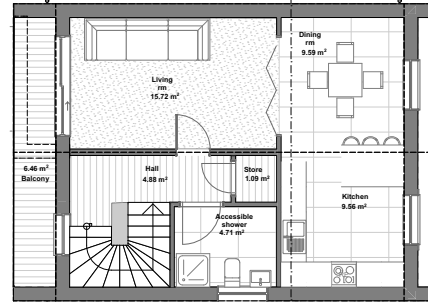
PLOT 1

# Your home layout

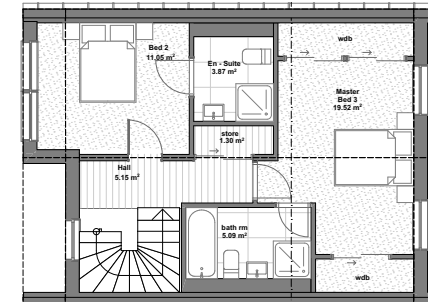
Ground floor



First floor

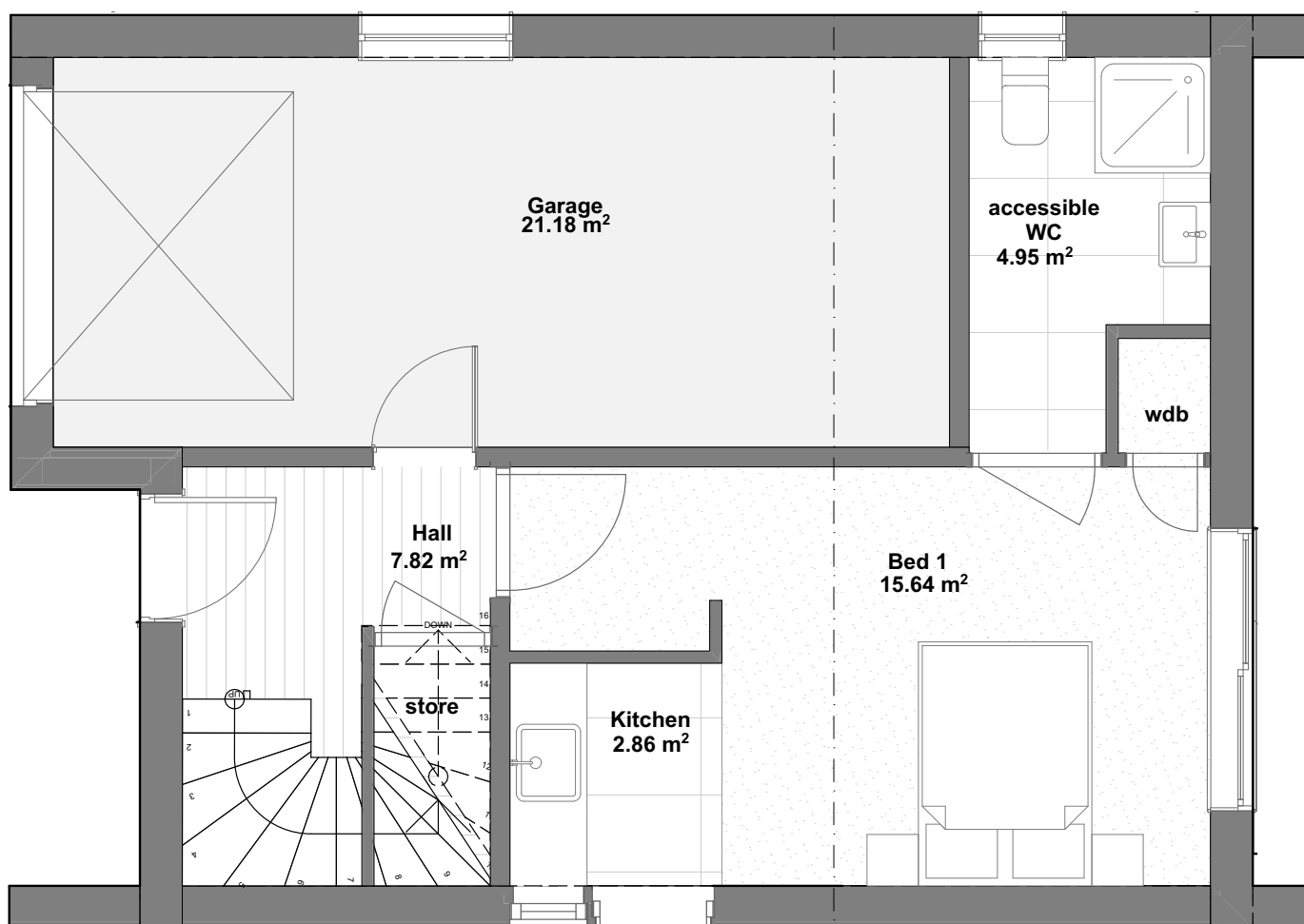


Second floor



PLOT 1

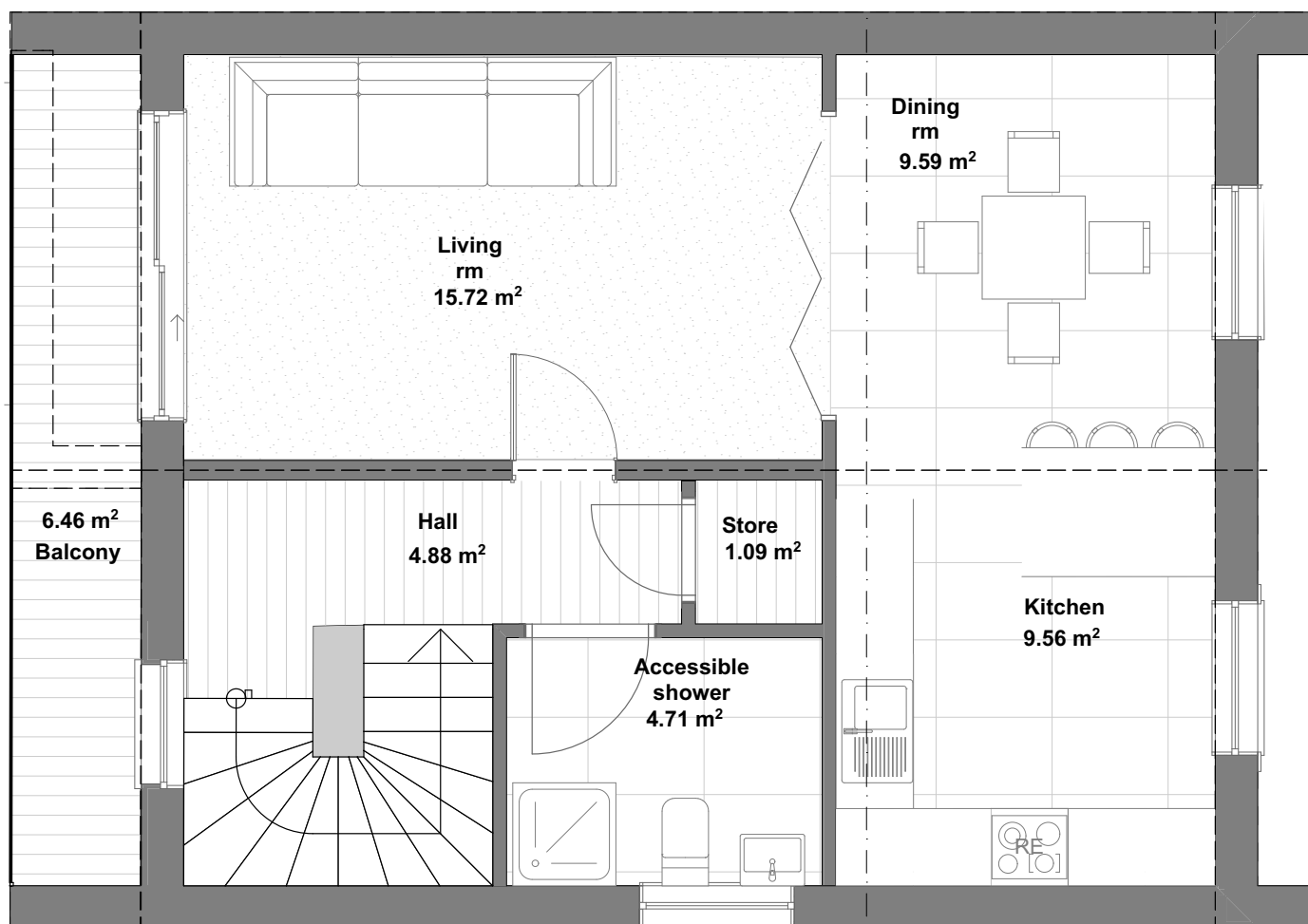
# Ground floor



ROOM	AREA
<b>Garage</b>	21.8m <sup>2</sup>
<b>Hall (including storage)</b>	7.82m <sup>2</sup>
<b>Room 1</b>	15.64m <sup>2</sup>
<b>Bathroom 1</b>	4.95m <sup>2</sup>
<b>Kitchenette</b>	2.86m <sup>2</sup>

PLOT 1

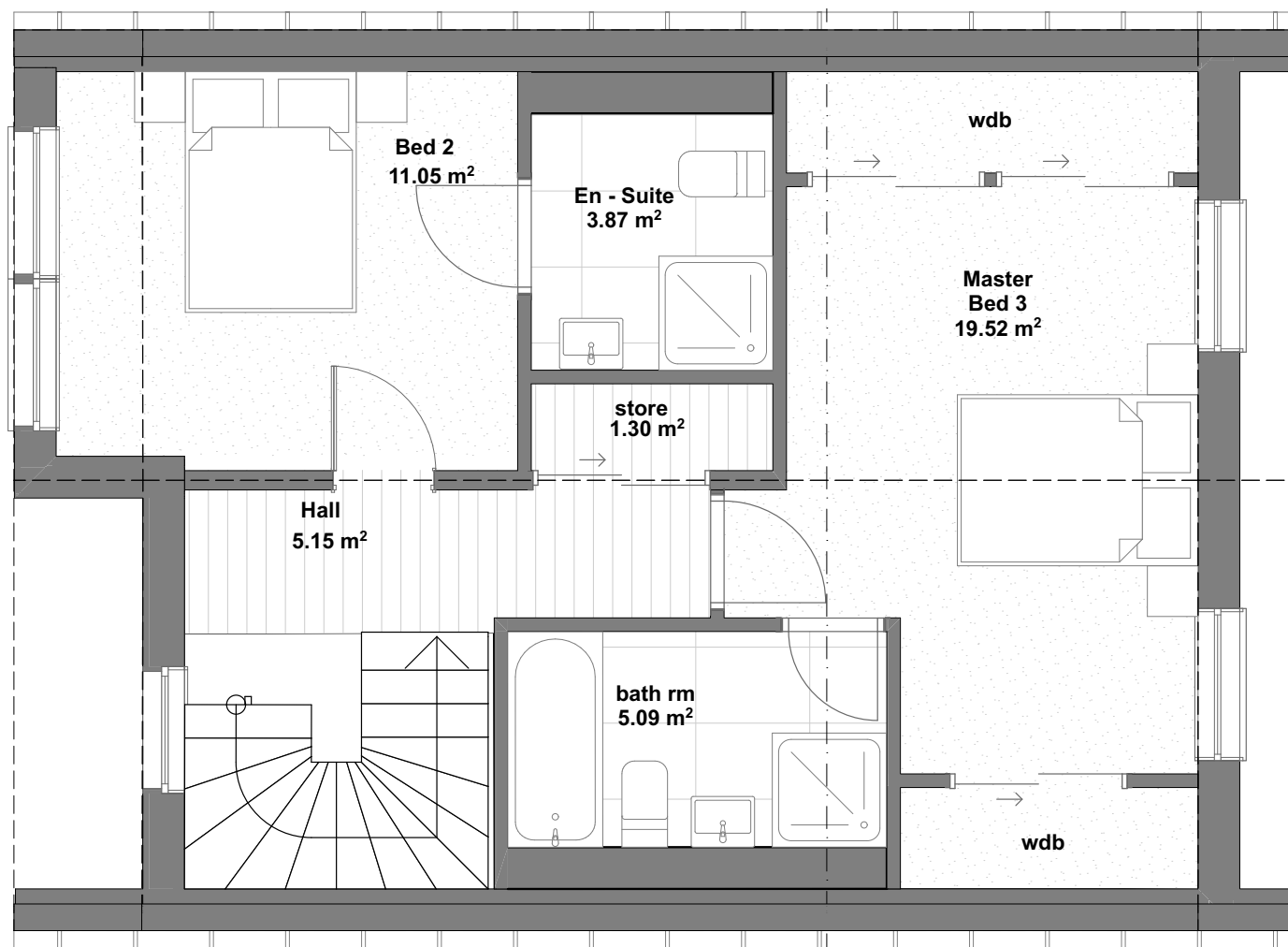
# First floor



ROOM	AREA
Balcony	6.46m <sup>2</sup>
Hall	4.88m <sup>2</sup>
Room 1	15.72m <sup>2</sup>
Room 2	9.59m <sup>2</sup>
Kitchen	9.56m <sup>2</sup>
Bathroom	4.71m <sup>2</sup>
Storage	1.09m <sup>2</sup>

PLOT 1

# Second floor



ROOM	AREA
<b>Bedroom 1</b>	11.05m <sup>2</sup>
<b>En-suite 1</b>	3.87m <sup>2</sup>
<b>Master bedroom</b>	19.52m <sup>2</sup>
<b>Master bathroom</b>	5.09m <sup>2</sup>
<b>Hall</b>	5.15m <sup>2</sup>
<b>Storage</b>	1.30m <sup>2</sup>